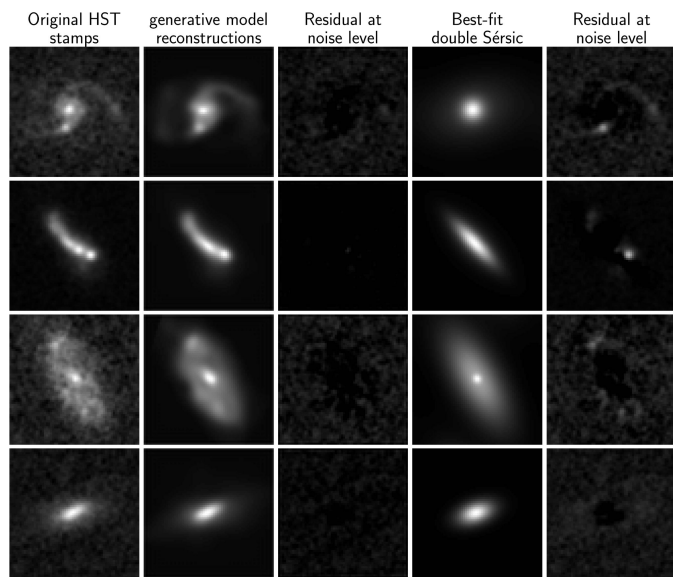


Topic XY: Determining the impact of visual+infrared galaxy morphology on color distributions with AI



The **morphology of galaxies** varies with wavelength -> this impacts how distributions of **galaxy colors** are measured, which has to be accurately **simulated** for next generation cosmological surveys.

In this project you will use a **deep learning generative model** to create **simulated images of galaxies** in multiple filter bands and measure their colors.

Requirements: some python experience, experience with AI and (extragalactic) astrophysics welcome

