

# Safety Instructions Clients / Visitors *Laboratory*

## TVFA Innsbruck

### Content:

- Arrangement of confidentiality
- General rules and rules in case of emergency
- Laboratory

## Arrangement of confidentiality

- Within the laboratory it is prohibited to take photos, to make video films or any kinds of sketches. Only clients are allowed to document their own tests.
- All kinds of technical and scientific data, which become available in course of the stay in the laboratory, are secret, must be treated with strict confidentiality and may not be used for one's own purposes.

## General rules and Special rules in case of emergency

- The instructions of the laboratory staff must be followed in all cases
- Clients and visitors may only stay in the agreed areas
- The laboratory staff will provide all necessary safety aspects during your stay in the laboratory (for example: necessary distance to test facility)
- Test facilities may not be touched and test equipment may not be put into operation – minimum distance – 2m (Exceptions to this must be agreed separately)
- Smoking ban in the whole area of the laboratory
- Emergency exits must be kept clear of obstructions
- In case of emergency keep calm, leave the laboratory using the escape route, follow the laboratory staff to the assembly point and check the completeness of the persons present in the laboratory

# Laboratory

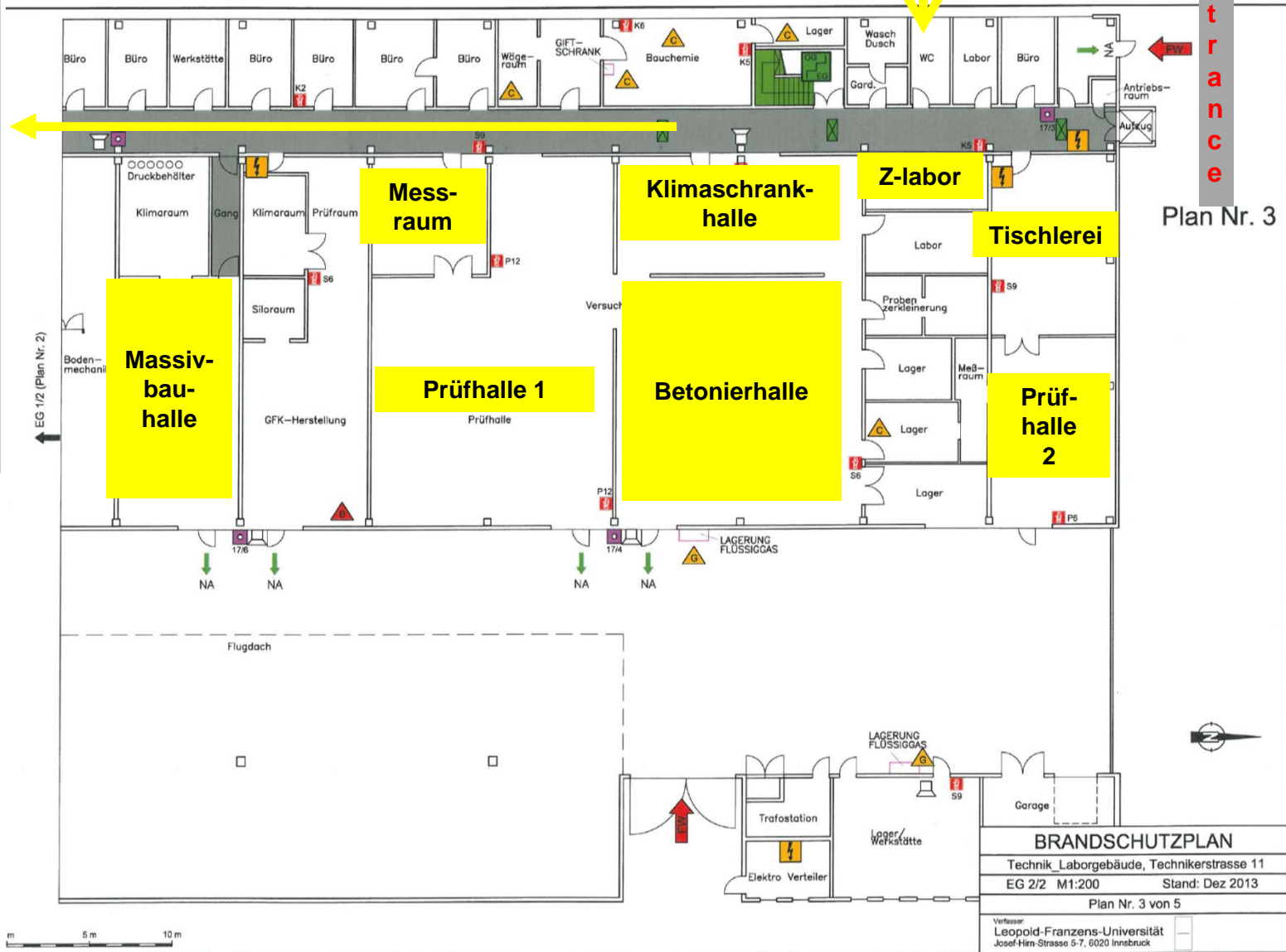
TVFA Innsbruck

TOILET LADIES

TOILET MEN

Entrance

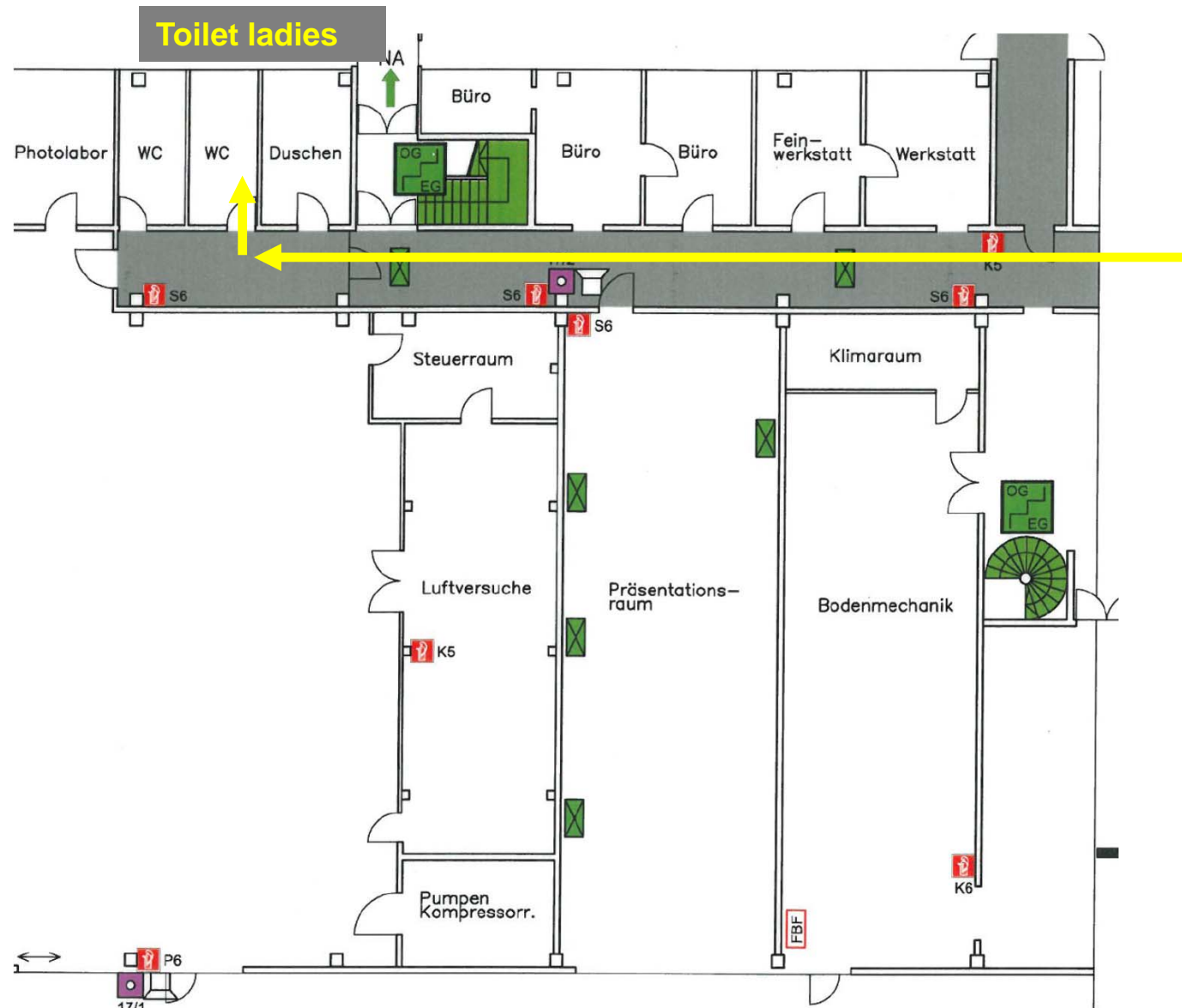
Plan Nr. 3



## BRANDSCHUTZPLAN

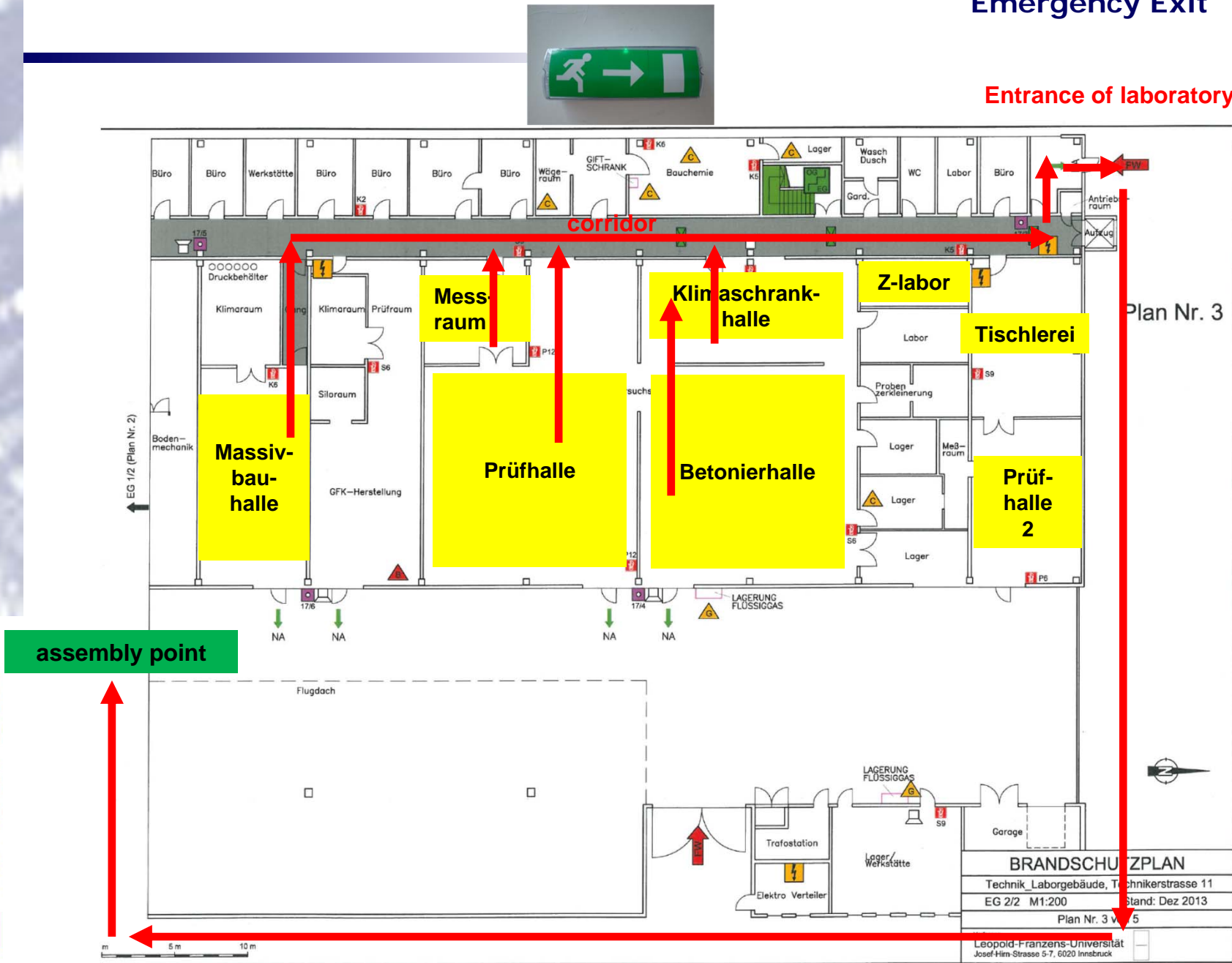
Technik Laborgebäude, Technikerstrasse 11  
 EG 2/2 M1:200 Stand: Dez 2013  
 Plan Nr. 3 von 5  
 Verfasser:  
 Leopold-Franzens-Universität  
 Josef-Him-Strasse 5-7, 6020 Innsbruck



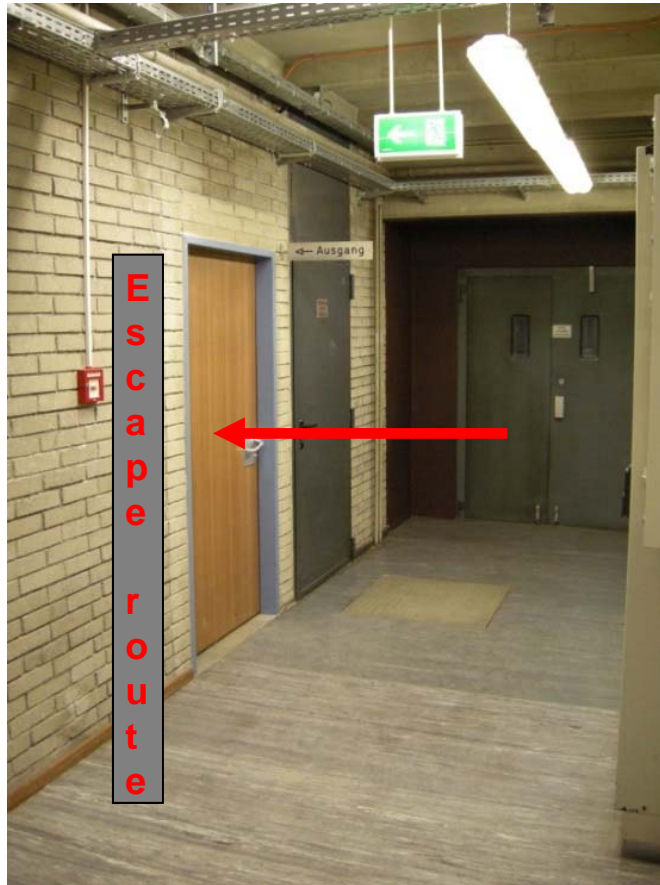


Emergency Exit

Entrance of laboratory

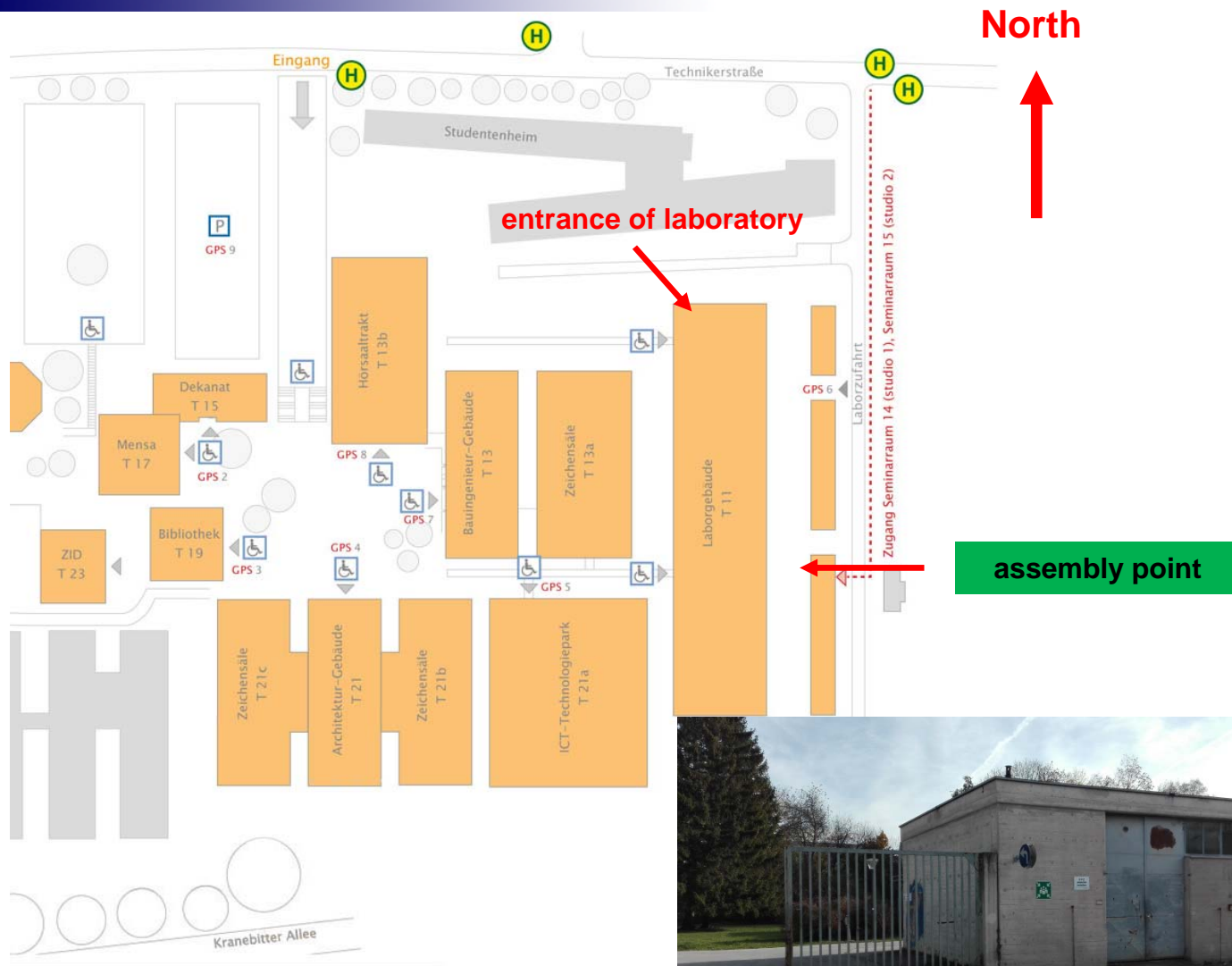


- Informations - **escape route**





### Assembly Point in case of fire



TVFA Innsbruck

universität  
innsbruck



**TVFA Innsbruck**

**Safety Instructions  
Clients / Visitors**

**Thank you for your attention!**